

Term Exam.
02/05/2020



Time all : 2 Hrs

- Assume any missing Dimensions.
- Draw with suitable scale.
- Attempt all questions.
- Don't erase the working details.
- Dimension the drawing.
- **N.B.** The examination consists of **One** questions on **One** pages.

Question 1 (22 marks)

Given two projections of a model as shown in Figure (1). Draw the Following:

1. Sectional elevation at ABCD,
2. Sectional side view at EF,
3. Side view in direction I, and
4. Sectional plan at GH.

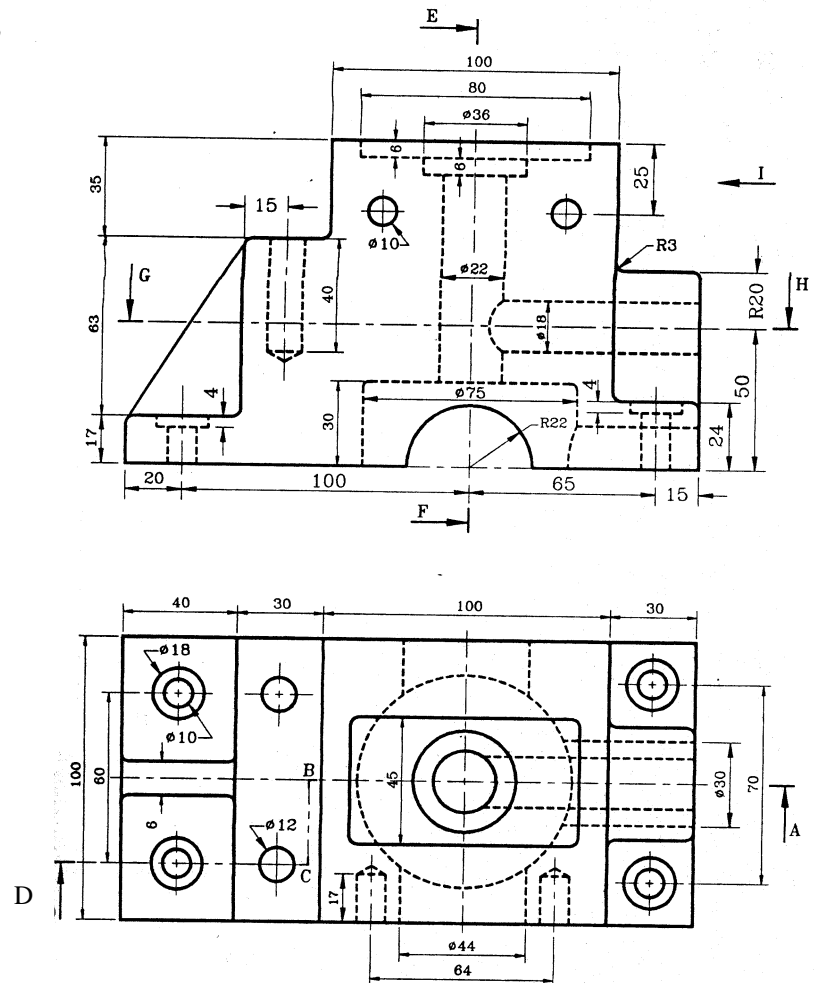
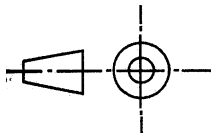


Figure (1)